

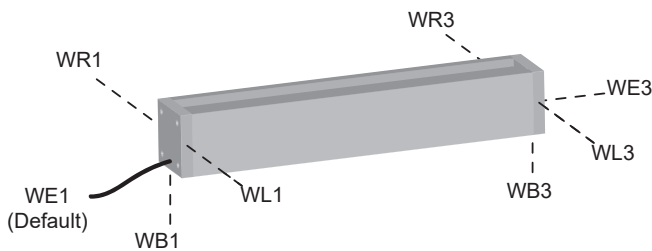
WIRE EXITS & DAISY CHAINED FIXTURES

SQUARE EXTRUSIONS

- ML1*
- 1S*
- 4SL
- 7SL
- 8SL
- 8CL
- 8FL
- 9SL
- 5SLW*
- LR
- MLR*

*(ML1, 1S, 5SLW & MLR extrusions available with WE1 or WE3 options ONLY.)

(LR = LightRun, MLR = Mini LightRun)



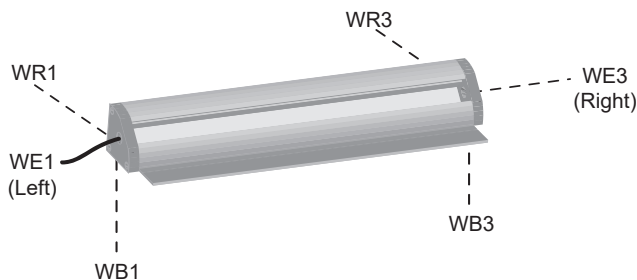
ROUND EXTRUSIONS

- 1R
- 2RL
- 3RL



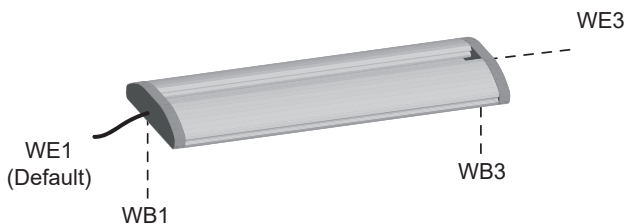
QUARTER ROUND EXTRUSION

- 1QL
- 2QL



DEMI-ELLIPSE EXTRUSION

- 1EL

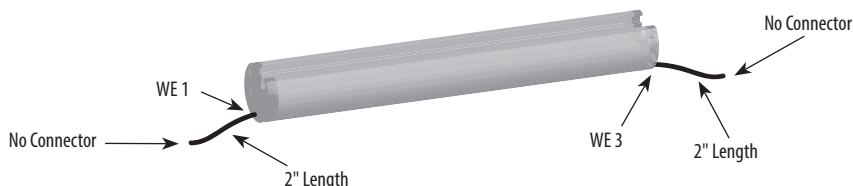


To Specify "Daisy-Chain" Configurations: In certain applications, "Daisy-Chain" configurations provide the best wiring solution. Specify the following "Daisy-Chain Termination" Modification for EVERY fixture needing to be daisy-chained; refer to the correct diagrams above for available Wire Exit options: See example below. Daisy-Chain lengths CANNOT exceed a TOTAL of 88 watts per run! (Choice up to 44 watts.)

DAISY-CHAIN TERMINATION

Specify two wire exits, two wire lengths, and two connectors for each fixture to be daisy-chained.

Sample specification: ELL - AC - DCT - WE1 - 2" - NC / WE3 - 2" - NC



LEFT SIDE				RIGHT SIDE			
CAT. NO.	ELL - AC -	-	-	/	-	-	
DCT	ASWE	WE1	WR1	Wire Length in Inches	NC	MC	FC
		WL1	WL1		WE3	WR3	WR3
		WB1	WB1		WL3	WL3	WL3
					WB3	WB3	WB3
					Wire Length in Inches	NC	MC
						FC	FC

NC	No Connector
MC	Male Connector
FC	Female Connector