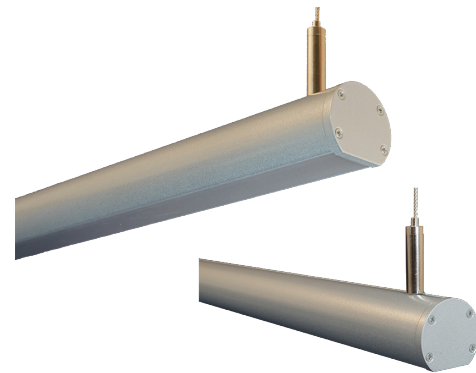


**New!** SR2 MEDIUM ROUND PENDANT  
DIRECT ONLY

IP40 | Medium round extrusion (1.5" [38.1mm] Diameter) for suspended lighting fixtures with direct light output. All LED options are Pitchless LED boards for full diffusion of LED diodes. Includes Nichia LEDs in choice of 3 Hi CRI and 1 Tunable White LED Board options. All LEDs binned to within 3 MacAdam Ellipses. Silver, Black, Bronze, White or Custom Finishes; frosted acrylic lens (standard). Low voltage power feed via jacketed wire in matching color.<sup>1</sup> Suspended via non-powered aircraft cables in 10 ft [3048mm] standard length. UL Listed dry/damp. Photometrics vary based on LED board and CCT; Refer to Suspended Fixture Fundamentals for lumen outputs, CCTs, wattage and other data specific to your fixture choices.

<sup>1</sup> Bronze fixture uses Black jacketed wire.



ELS- SR2 -

LED	
3140	230 lm/ft, 2.2 w/ft, 95+ CRI
3160	443 lm/ft, 4.3 w/ft, 95+ CRI
3180	712 lm/ft, 6.9 w/ft, 95+ CRI
7180	715 lm/ft, 6.9 w/ft

HI CRI     Tunable White

CCT	
20	2000°K
22	2200°K
25	2500°K
27	2700°K
30	3000°K
35	3500°K
40	4000°K
45	4500°K
50	5000°K
20/30	2000°/3000°K
25/40	2500°/4000°K
30/40	3000°/4000°K
35/45	3500°/4500°K

Lens	
FR	Frosted Acrylic

Fixture Finish	
AL	Silver Powder Coat
BL	Black Powder Coat
BZ	Bronze Powder Coat
WH	White Powder Coat
C	Custom

Driver Options	
RD1	1 Remote Driver + 5" Canopies <sup>3</sup>
RD2	2 Remote Drivers + 5" Canopies <sup>3</sup>
CMD1	Center Mount Single Driver <sup>1</sup>
CMD2	Center Mount Dual Drivers + 5" Canopies <sup>2</sup>
EMD1	End Mount Single Driver + 5" Canopy <sup>1</sup>
EMD2A	End Mount Dual Drivers + 5" Canopies <sup>2</sup>
EMD2B	Dual End Mount Single Drivers <sup>2</sup>

<sup>1</sup> Includes 1 ELV Dimmable 96w Driver  
<sup>2</sup> Includes 2 ELV Dimmable 96w Drivers  
<sup>3</sup> Remote Driver Sold Separately

Listings & Options	
UL	UL Listed
CE	CE Marked (RoHS)
TBR	T-Bar Mount
DW	Drywall/Wood Mount
CH	Chrome Canopy Box

Fixture Length	
----------------	--

See Suspended Fixture Fundamentals. Choose the correct Code number for the LED board(s) and fixture length of your choice.