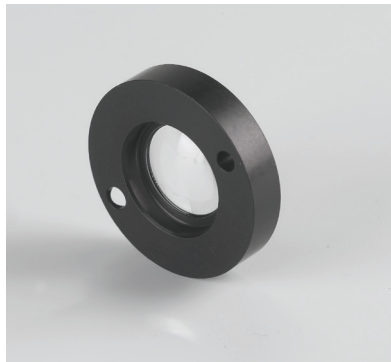


# SPOT LIGHT SERIES

## ADJUSTABLE FIBER OPTIC SPOT LIGHT FIXTURES

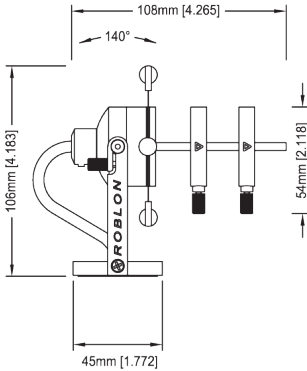
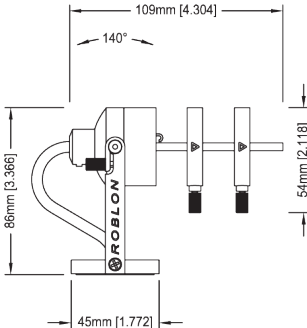
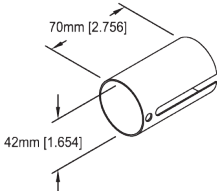
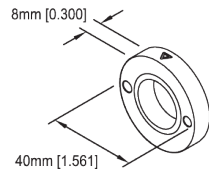


- *SPOT LIGHTS AND FRAMING PROJECTORS*
- *PMMA OR GLASS FIBER*
- *HARD TO SOFT FOCUS*
- *UV-FREE FRAMING AND SPOT LIGHTING*

# Fiber Optic Lighting

## SPOT LIGHT SERIES - ADJUSTABLE FIBER OPTIC SPOT LIGHT FIXTURES

### 200 Series Spot Light Fixtures

SPECIFICATIONS		CAT. NO. SL - ID - SF - 200 - FP -
	<p><b>Fiber Type:</b> PMMA or Glass</p> <p><b>Fiber Sizes:</b> 2.0mm, 3.0mm, 4.5mm, 6.0mm</p> <p><b>Ferrule Type:</b> Indoor Ferrule</p> <p><b>Fixture Style:</b> 200 Series</p> <p><b>Lens Assembly:</b> Framing Projector</p> <p><b>Focus:</b> Adjustable</p> <p><b>Beam Angle:</b> 34°</p> <p><b>Mounting:</b> Surface Mount, Screwed</p> <p><b>Primary Material:</b> Aluminum</p>	<p><b>Description:</b> Spot Light 200 Series (Roblon Framing Spot) adjustable surface mounted framing projector with four adjustable shutter blades; shutter assembly rotates around body for accurate shutter alignment; triple lens system for crisp shutter cuts; accepts PMMA and glass fiber up to 6.0mm; multiple finishes available.</p> <p><b>Finishes Available:</b> Silver (AL), Black (BL), Bronze (BZ)</p>
	<p><b>Fiber Type:</b> PMMA or Glass</p> <p><b>Fiber Sizes:</b> 2.0mm, 3.0mm, 4.5mm, 6.0mm</p> <p><b>Ferrule Type:</b> Indoor Ferrule</p> <p><b>Fixture Style:</b> 200 Series</p> <p><b>Lens Assembly:</b> Gobo Projector</p> <p><b>Focus:</b> Adjustable</p> <p><b>Beam Angle:</b> 34°</p> <p><b>Mounting:</b> Surface Mount, Screwed</p> <p><b>Primary Material:</b> Aluminum</p> <p><b>Gobo Size:</b> MAC 250</p> <p><b>Pattern Thickness:</b> 0.1mm - 2.0mm</p> <p><b>Outside Diameter:</b> 22.5mm</p> <p><b>Image Size:</b> 14.0mm (min)/17.0mm (max)</p>	<p><b>Description:</b> Spot Light 200 Series (Roblon Gobo Spot) adjustable surface mounted gobo projector; accepts standard or custom patterns in aluminum, glass or acetate; gobo assembly rotates around body for accurate pattern alignment; triple lens system for crisp imaging; accepts PMMA or glass fiber up to 6.0mm; multiple finishes available.</p> <p><b>Finishes Available:</b> Silver (AL), Black (BL), Bronze (BZ)</p>
	<p><b>Accessory:</b> Light Shield</p> <p><b>Fixture Style:</b> 200 Series</p> <p><b>Primary Material:</b> Aluminum</p>	<p><b>Description:</b> Optional hood for Spot Light 200 Series fixtures blocks stray light and reduces glare.</p> <p><b>Finishes Available:</b> Silver (AL), Black (BL), Bronze (BZ)</p>
	<p><b>Accessory:</b> Narrow Spot Lens</p> <p><b>Fixture Style:</b> 200 Series</p> <p><b>Primary Material:</b> Aluminum</p> <p><b>Beam Angle:</b> 17°</p>	<p><b>Description:</b> Optional lens for Spot Light 200 Series fixtures to create narrow beam angle for long throws.</p> <p><b>Finishes Available:</b> Silver (AL), Black (BL), Bronze (BZ)</p>