

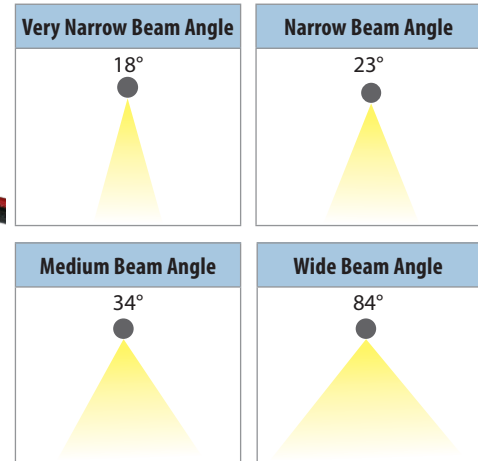
## New! ELEGANCE MICRO-PUCK FUNDAMENTALS

All LEDs binned to within a 2 MacAdam ellipse CCT tolerance of  $\pm 60^\circ$ .

	1239 / 350mA Driver	1239H / 350mA Driver
LUMEN OUTPUT	95 lm	92 lm
FIXTURE WATTAGE	1.1	1.1
CRI	87	95+
CCT OPTIONS	2700K, 3000K, 3500K, 4000K, 4500K	2700K, 3000K, 3500K, 4000K
APPLIED LED	Nichia 219C	Nichia 219C
LED EFFICACY*	94 lm/w	91 lm/w
FIXTURE EFFICACY* not including driver losses	95 lm/w	92 lm/w



- 1 watt
- Super Small
- Super Bright



All photometrics based on 3500K CCT using a wide lens

LENSING	Narrow, Medium or Wide Lens
FINISH	Silver, Black, Bronze, White, Custom Finishes on Request
ELECTRICAL	<b>Driver Type:</b> Constant Current, 350mA, Class 2 UL Listed <b>Input Voltage:</b> 3v <b>Dimming:</b> 0-10 v, DMX, DALI <b>Feed Wire:</b> 96" [2.44m] of 20 AWG Wire [1.02mm <sup>2</sup> ], Male Connector <b>Operating Ambient Temperature:</b> -22° to 95° F [-30° to 40° C] <b>Humidity:</b> 90% Non-Condensing
LIFE & WARRANTY	50,000 HR lifetime ( $T_a = -25^\circ\text{C}$ to $40^\circ\text{C}$ ; $T_c$ max $75^\circ\text{C}$ ); 5 year limited warranty
MOUNTING	Adhesive, Press Fit, Mounting Clip or Magnet
LISTINGS & TESTS	eUL (2108, 8750); CE RoHS Compliant (if specified); LM79, LM80; IP20, Dry Location Only The EU's Restriction of Hazardous Substances Directive (RoHS) restricts the use of six hazardous substances* in electrical and electronic equipment (* Lead (Pb), Mercury, Cadmium, Hexavalent chromium, Polybrominated biphenyls and Polybrominated diphenyl ether (PBDE)).

Our smallest fixture ever, the new **Elegance Micro-Puck** was designed to focus a small, bright light on a single specific product. Ideal for displays that project light up into glass objects (i.e. vases, art glass, perfume bottle). Available with 18°, 23°, 34°, or 84° lens options.

Elegance **Micro-Puck Standard** can be recessed into millwork and fixed via adhesive, or press fit; optional mounting clip screws to the mounting surface and holds fixture flush to mounting surface. Elegance **Micro-Puck Magnet** attaches to any ferrous surface. Both versions are dimmable and available in various color temperatures up to 95+ CRI.

CCT	2700K	3000K	3500K	4000K	4500K
LIGHT OUTPUT CONVERSION	0.88	1.0	1.0	1.08	1.08

Beam	Lumens	Footcandles @ 12"
VN	322 lm	87 fc
N	349 lm	95 fc
M	198 lm	95 fc
W	58 lm	49 fc

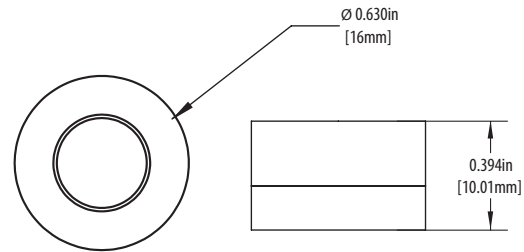
VLT reserves the right to change specifications without notice. Please visit [www.vltcorp.com](http://www.vltcorp.com) for current cut sheets.

MADE IN USA 

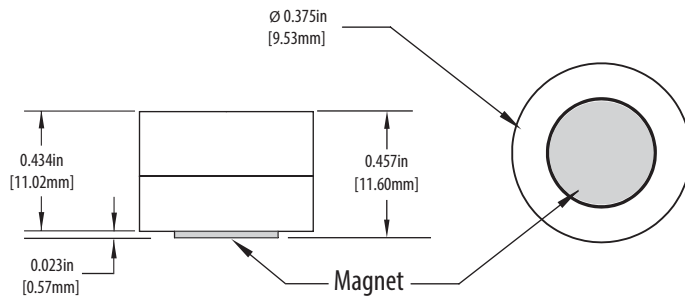
ELEGANCE MICRO-PUCK

IP20 | Super-small accent fixture for surface mount, recessed or magnet installation. Features Constant Current Nichia LED boards with either 87 or 95+ CRI in various color temperatures. All LEDs include ±60° Micro Binning. For display or accent applications; fixture can be glued or press fit, clipped to mounting surface using Side Mount Spring Clip, or attached via magnet to ferrous surface. Available with lens options from 18° - 84°. Available in Silver, Black, Bronze, White or Custom Finishes.

Photometrics vary based on CCT and lensing.



Without Magnet: 0.394" [10.01mm] Overall Height



With Magnet: 0.457" [11.60mm] Overall Height

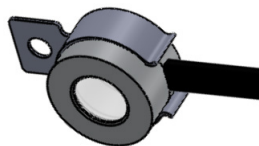
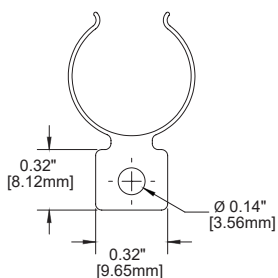
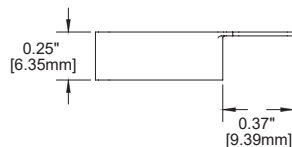
Style		CCT		Finish		Lens Options		Listings & Mounting Options	
MPS	Micro Puck Standard	27	2700°K	AL	Silver	VN	18° Beam	UL	UL Listed
MPM	Micro Puck Magnet	30	3000°K	BL	Black	N	23° Beam	CE	CE Marked (RoHS)
		35	3500°K	BZ	Bronze	M	34° Beam		
		40	4000°K	WH	White	W	84° Beam		
		45	4500°K	C	Custom				
LED									
1239	87 CRI								
1239H	95+ CRI <sup>1</sup>								
	Standard		HI CRI						

<sup>1</sup> Not Available in 4500°K CCT

SIDE MOUNT SPRING CLIP

SPECIFICATIONS

CAT. NO. ELL - AC - MCP-SMSC



Dimensions: 1.969" [50.0mm] x 0.689" [17.50mm]

Material: Aluminum

**Description:** Side Mount Spring Clip Accessory screws to mounting surface with screw provided; holds Micro-Puck flush to mounting surface.