

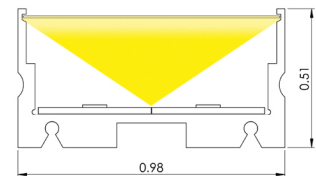
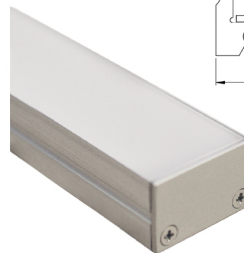
9LR COMPACT LARGE SQUARE EXTRUSION - EDGE TO EDGE LENS

9LR: IP54 | Compact Large square extrusion for linear lighting applications. Slim extrusion wall (0.15") with 2 options of lumen lensing for seamless dot free imaging. UL Listed dry/damp. Includes Nichia LEDs in choice of 22 LED Board options. See lumen outputs, CCTs, wattage and other variables on Linear Fundamentals.

For maximum lumen output, choose Dual Row 3760D or 6760D LED boards. For variable white with separate controls, specify two rows of any LED board (i.e. "2 x 3720") and specify two CCTs (i.e. "22/40").

Available in Silver, Black or Bronze Anodized, White Powder Coated, or Custom Finishes. Photometrics vary based on CCT and lensing; see vltcorp.com for conversion and other data specific to your fixture choices.

AVAILABLE IN LENGTHS UP TO 146.02" [3709MM]



ELL-9LR-

	LED	CCT	Finish	Lens Options	Wire Exit	Listings & Options											
STANDARD PITCH	1720	260 lm/ft, 1.8 w/ft, 83+ CRI	20	2000°K	AL Silver Anodized	LF60 Medium Diffusion	WE1 Default	<table border="1"> <tr> <td>UL</td> <td>UL Listed</td> <td>c(UL)us</td> </tr> <tr> <td>CE</td> <td>CE Marked (RoHS)</td> <td>CE</td> </tr> <tr> <td>MAG</td> <td>Magnetic Mount</td> <td></td> </tr> </table>	UL	UL Listed	c(UL)us	CE	CE Marked (RoHS)	CE	MAG	Magnetic Mount	
	UL	UL Listed	c(UL)us														
	CE	CE Marked (RoHS)	CE														
	MAG	Magnetic Mount															
	2730	397 lm/ft, 2.9 w/ft, 83+ CRI	22	2200°K	BL Black Anodized	LF100 Heavy Diffusion	C Custom										
	4740	528 lm/ft, 3.7 w/ft, 83+ CRI	25	2500°K	BZ Bronze Anodized												
	5760	665 lm/ft, 4.9 w/ft, 83+ CRI	27	2700°K	WH White Powder Coat												
	6760	875 lm/ft, 6.5 w/ft, 83+ CRI	30	3000°K	C Custom												
	3720	223 lm/ft, 1.8 w/ft, 95+ CRI	35	3500°K													
	3740	430 lm/ft, 3.5 w/ft, 95+ CRI	40	4000°K													
3760	609 lm/ft, 5.2 w/ft, 95+ CRI	45	4500°K														
3790	621 lm/ft, 6.9 w/ft, 98 CRI ¹	50	5000°K														
3760D	1218 lm/ft, 10.4 w/ft, 95+ CRI	20/30	2000°K/ 3000°K ²														
6760D	1750 lm/ft, 13.0 w/ft, 83+ CRI	25/40	2500°K/ 4000°K ²														
3790D	1242 lm/ft, 13.8 w/ft, 98 CRI	30/40	3000°K/ 4000°K ²														
PITCHLESS	5140	287 lm/ft, 2.2 w/ft, 83+ CRI	35/45	3500°K/ 4500°K ²													
	5160	571 lm/ft, 4.3 w/ft, 83+ CRI															
	5180	920 lm/ft, 6.9 w/ft, 83+ CRI															
	3140	237 lm/ft, 2.2 w/ft, 95+ CRI															
	3160	469 lm/ft, 4.3 w/ft, 95+ CRI															
	3180	773 lm/ft, 6.9 w/ft, 95+ CRI															
	3150	202 lm/ft, 2.2 w/ft, 98 CRI ¹															
	3170	404 lm/ft, 3.9 w/ft, 98 CRI ¹															
	3190	710 lm/ft, 6.9 w/ft, 98 CRI ¹															
	7180	750 lm/ft, 6.9 w/ft, 83+/95+ CRI ²															

- Standard
- HI CRI
- Dual Rows
- Pitchless/Standard
- Pitchless/Hi CRI
- Pitchless/Dual Color
- Ultra HI CRI

¹ Not Available in 20K, 22K or 25K CCT
² 7180 Boards Only: CRI Varies Based on CCT Combination

Fixture Length

See Fixture Length and Wattage Table. Choose the correct Code number for the LED board and fixture length of your choice or specify Custom Length as follows: C (12.25") or C [311mm]

Fixture Accessories

ELL - AC - 9LR - MC	ELL - AC - 9LR - AMC	ELL - AC - S123 - AB	Factory Installed; See Options Above
Fixed Metal Mounting Clip. Fixture extrusion snaps into clip. Allow 1 per 12" (min. 2 per fixture). See Mounting Options.	Adjustable Metal Mounting Clip. Off-set screws allow flush mounting. Bends to desired angle. Allow 1 per 12" (min. 2 per fixture). See Mounting Options.	Adjustable Metal Bracket for use with Fixed Metal Mounting Clip (one bracket per clip). 30° adjustability. Raises fixture 3/8" (9.52mm). Bracket allows repeated angle adjustments, and easier angle adjustments in hard-to-reach areas like ceiling covers. See Mounting Options.	Magnetic Mount Small, strong, factory installed magnets recess into rear side of fixture extrusions for mounting of fixture onto suitable ferrous surface or accessory Steel Mounting Plates; 3 magnets per foot. See Mounting Options.