

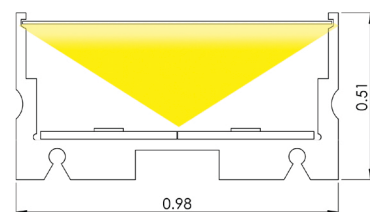
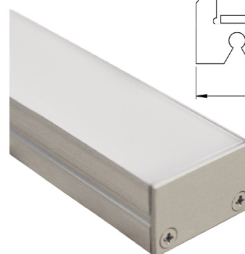
New! 9LR COMPACT CHOICE LARGE SQUARE EXTRUSION - EDGE TO EDGE LENS

9LR Choice: IP54 | Compact Large square extrusion for linear lighting applications. Slim extrusion wall (0.15") with 2 options of luminous lensing for seamless dot free imaging. UL Listed dry/damp. Includes selection of 10 LED Boards: 3 with Nichia LEDs on a Standard Pitch; 4 with EssentialLEDs Choice LEDs on a Narrow Pitch, with Dim-to-Warm (3000°K to 1800°K) capability when used with Lutron driver. See lumen outputs, CCTs, wattage and other variables on Choice Linear Fundamentals.

For maximum lumen output, choose Dual Row 3435D LED Board.

Available in Silver or Black Finishes. LF60 (Medium) or LF100 (Heavy) required for full diffusion. Photometrics vary based on CCT and lensing; see vltcorp.com for conversion and other data specific to your fixture choices.

AVAILABLE IN LENGTHS UP TO 95.46" [2425MM]



ELC-9LR-

LED	
1435	288 lm/ft, 2.7 w/ft, 90+ CRI ²
2435	384 lm/ft, 3.7 w/ft, 90+ CRI ²
3435	478 lm/ft, 5.5 w/ft, 90+ CRI ²
4435	610 lm/ft, 5.8 w/ft, 90+ CRI ²
3435D	956 lm/ft, 11.0 w/ft, 90+ CRI ²
1320	222 lm/ft, 2.0 w/ft, 95+ CRI ¹
2320	335 lm/ft, 2.8 w/ft, 95+ CRI ¹
4320	590 lm/ft, 5.9 w/ft, 95+ CRI ¹
7435	455 lm/ft, 5.5 w/ft, 90+ CRI ³
7435D	910 lm/ft, 11 w/ft, 90+ CRI ³

Finish	
AL	Silver Anodized
BL	Black Anodized

Wire Exit	
WE1	Default
C	Custom

Listings & Options	
UL	UL Listed
CE	CE Marked (RoHS)
MAG	Magnetic Mount

CCT	
23	2300°K
27	2700°K
30	3000°K
35	3500°K
40	4000°K
45	4500°K
18/30	1800°K/3000°K ⁶

Lens Options	
LF60	Medium Diffusion
LF100	Heavy Diffusion

Fixture Length
See Fixture Length and Wattage Table. Choose the correct Code number for the LED board and fixture length of your choice or specify Custom Length as follows: C (12.25") or C [311mm]

- Narrow Pitch Choice LEDs
- Standard Pitch Nichia LEDs
- Dual Rows
- Dim-to-Warm LEDs

⁶7435 Boards Only: CRI varies based on CCT combination

¹ Not Available in 23K CCT

² Not Available in 45K CCT

³ Requires a Lutron Driver

Fixture Accessories

ELL - AC - 9LR - MC	ELL - AC - 9LR - AMC	ELL - AC - S123 - AB	Factory Installed; See Options Above
Fixed Metal Mounting Clip. Fixture extrusion snaps into clip. Allow 1 per 12" (min. 2 per fixture). See Mounting Options.	Adjustable Metal Mounting Clip. Offset screws allow flush mounting. Bends to desired angle. Allow 1 per 12" (min. 2 per fixture). See Mounting Options.	Adjustable Metal Bracket for use with Fixed Metal Mounting Clip (one bracket per clip). 30° adjustability. Raises fixture 3/8" (9.52mm). Bracket allows repeated angle adjustments, and easier angle adjustments in hard-to-reach areas like ceiling coves. See Mounting Options.	Magnetic Mount Small, strong, factory installed magnets recess into rear side of fixture extrusions for mounting of fixture onto suitable ferrous surface or accessory Steel Mounting Plates; 3 magnets per foot. See Mounting Options.