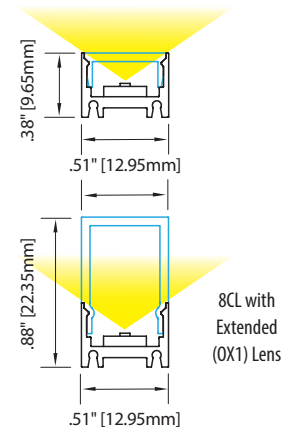
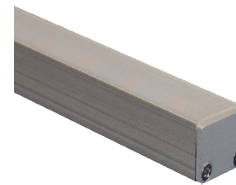


8CL MEDIUM SQUARE COMPACT EXTRUSION - EDGE TO EDGE LENS

8CL: IP54 | Compact medium square extrusion for linear lighting applications. Slim extrusion wall (0.15") and edge-to-edge snap-in lensing for extra lumen output. UL Listed dry/damp. Includes Nichia LEDs in choice of 21 LED Board options. See lumen outputs, CCTs, wattage and other variables on Linear Fundamentals.

Available in Silver, Black or Bronze Anodized, White Powder Coated, or Custom Finishes. Photometrics vary based on CCT and lensing; see vltcorp.com for conversion and other data specific to your fixture choices.

AVAILABLE IN LENGTHS UP TO 146.02" [3709MM]



ELL- 8CL -

	LED	CCT	Finish	Lens Options	Wire Exit	Listings & Options							
STANDARD PITCH	1720	260 lm/ft, 1.8 w/ft, 83+ CRI	20	2000°K	AL	Silver Anodized	PG	Clear Acrylic	WE1	Default	UL	UL Listed	UL US
	2730	397 lm/ft, 2.9 w/ft, 83+ CRI	22	2200°K	BL	Black Anodized	L2	Lens 2 (41° - 44°)	C	Custom	CE	CE Marked (RoHS)	CE
	4740	528 lm/ft, 3.7 w/ft, 83+ CRI	25	2500°K	BZ	Bronze Anodized	L3	Lens 3 (58° - 61°)			MAG	Magnetic Mount	
	5760	665 lm/ft, 4.9 w/ft, 83+ CRI	27	2700°K	WH	White Powder Coat	L4	Lens 4 (91° - 92°)					
	6760	875 lm/ft, 6.5 w/ft, 83+ CRI	30	3000°K	C	Custom	OP1	Opal 1, Frosted					
	3720	223 lm/ft, 1.8 w/ft, 95+ CRI	35	3500°K			OP2	Opal 2, Medium					
	3740	430 lm/ft, 3.5 w/ft, 95+ CRI	40	4000°K			OP3	Opal 3, Heavy					
	3760	609 lm/ft, 5.2 w/ft, 95+ CRI	45	4500°K			OX1	Ext. Lens, Opal 1					
	3790	621 lm/ft, 6.9 w/ft, 98 CRI ¹	50	5000°K									
	PITCHLESS	5140	287 lm/ft, 2.2 w/ft, 83+ CRI	20/30	2000°K/ 3000°K ²								
5160		571 lm/ft, 4.3 w/ft, 83+ CRI	25/40	2500°K/ 4000°K ²									
5180		920 lm/ft, 6.9 w/ft, 83+ CRI	30/40	3000°K/ 4000°K ²									
3140		237 lm/ft, 2.2 w/ft, 95+ CRI	35/45	3500°K/ 4500°K ²									
3160		469 lm/ft, 4.3 w/ft, 95+ CRI											
3180		773 lm/ft, 6.9 w/ft, 95+ CRI											
3150		202 lm/ft, 2.2 w/ft, 98 CRI ¹											
3170		404 lm/ft, 3.9 w/ft, 98 CRI ¹											
3190		710 lm/ft, 6.9 w/ft, 98 CRI ¹											
7180		750 lm/ft, 6.9 w/ft, 83+/95+ CRI ²											
5133		315 lm/ft, 3.4 w/ft, 87 CRI ¹											
5163	548 lm/ft, 6.6 w/ft, 87 CRI ¹												

- Standard
- HI CRI
- Pitchless/Standard
- Pitchless/Hi CRI
- Pitchless/Dual Color
- Pitchless/Narrow Focus
- Ultra HI CRI

¹ Not Available in 20K, 22K or 25K CCT
² 7180 Boards Only: CRI Varies Based on CCT Combination

Fixture Length

See Fixture Length and Wattage Table. Choose the correct Code number for the LED board and fixture length of your choice or specify Custom Length as follows: C (12.25") or C [311mm]

Fixture Accessories



Fixed Metal Mounting Clip. Fixture extrusion snaps into clip. Allow 1 per 12" (min. 2 per fixture). See Mounting Options.

Adjustable Metal Mounting Clip Offset screws allow flush mounting. Bends to desired angle. Allow 1 per 12" (min. 2 per fixture). See Mounting Options.

Adjustable Metal Bracket for use with Fixed Metal Mounting Clip (one bracket per clip). 30° adjustability. Raises fixture 3/8" (9.52mm). Bracket allows repeated angle adjustments, and easier angle adjustments in hard-to-reach areas like ceiling covers. See Mounting Options.

Magnetic Mount Small, strong, factory installed magnets recess into rear side of fixture extrusions for mounting of fixture onto suitable ferrous surface or accessory Steel Mounting Plates. 3 magnets per foot. Magnets protrude 0.09" [2.3mm] above rear surface of extrusion.