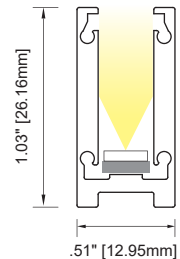
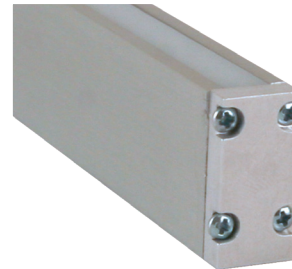


4SL MEDIUM SQUARE TALL EXTRUSION - LENSED

4SL: IP40 | Square extrusion with 1" depth capable of full diffusion of LED diodes. Use decoratively for a slim (9/32") visible line of diffused light, or light up polished surfaces without reflected diodes. UL Listed dry/damp. Includes Nichia LEDs in choice of 11 LED Board options. See lumen outputs, CCTs, wattage and other variables on Linear Fundamentals.

Available in Silver or Black Anodized or Custom Finishes. Choice of 3 Opal diffusion lenses. Opal 2 (Medium) or Opal 3 (Heavy) required for full diffusion. Photometrics vary based on CCT and lensing; see vltcorp.com for conversion and other data specific to your fixture choices.



ELL- 4SL -

LED		CCT		Finish		Lens Options		Wire Exit		Listings & Options	
1720	260 lm/ft, 1.8 w/ft, 83 CRI	20	2000°K	AL	Silver Anodized	OP1	Opal 1, Frosted	WE1	Default	UL	UL Listed
2730	397 lm/ft, 2.9 w/ft, 83 CRI	22	2200°K	BL	Black Anodized	OP2	Opal 2, Medium ²	C	Custom	CE	CE Marked (RoHS)
4740	528 lm/ft, 3.7 w/ft, 83 CRI	25	2500°K	C	Custom	OP3	Opal 3, Heavy ²			MAG	Magnetic Mount
5760	665 lm/ft, 4.9w/ft, 83CRI	27	2700°K								
6760	875 lm/ft, 6.5w/ft, 83 CRI	30	3000°K								
3720	223 lm/ft, 1.8 w/ft, 95 CRI	35	3500°K								
3740	430 lm/ft, 3.5 w/ft, 95 CRI	40	4000°K								
3760	609 lm/ft, 5.2 w/ft, 95 CRI	45	4500°K								
3790	621 lm/ft, 6.9 w/ft, 98 CRI ¹	50	5000°K								
5133	315 lm/ft, 3.4 w/ft, 87 CRI ¹										
5163	548 lm/ft, 6.6 w/ft, 87 CRI ¹										

² Will provide full diffusion

Fixture Length
See Fixture Length and Wattage Table. Choose the correct Code number for the LED board and fixture length of your choice or specify Custom Length as follows: C (12.25") or C [311mm]

Standard HI CRI Ultra HI CRI Pitchless

¹ Not Available in 20K, 22K or 25K CCT

Fixture Accessories - See Mounting Options For More Information on Rough-in Kit

ELL - AC - 4SL - MC	ELL - AC - 4SL - AMC	ELL - AC - S123 - AB	ELL - AC - 4SL - WCR - AL	Factory Installed; See Options Above
Fixed Metal Mounting Clip Fixture extrusion snaps into clip. Allow 1 per 12" (min. 2 per fixture). See Mounting Options.	Adjustable Metal Mounting Clip Offset screws allow flush mounting. Bends to desired angle. Allow 1 per 12" (min. 2 per fixture). See Mounting Options.	Adjustable Metal Bracket for use with Fixed Metal Mounting Clip (one bracket per clip). 30° adjustability. Raises fixture 3/8" (9.52mm). Bracket allows repeated angle adjustments and easier angle adjustments in hard-to-reach areas like ceiling coves. See Mounting Options.	Wall / Ceiling Mounting Rough-in; Specify length to match fixture length. 8-32 flat head screw allows height adjustment for flush installation. (Not walk-over or drive-over rated). See Mounting Options.	Magnetic Mount Factory-installed magnets hold fixture securely to ferrous surface or accessory Steel Mounting Plates ; 3 magnets per foot, factory installed. Magnets protrude 0.09" [2.3mm] above rear surface of extrusion.