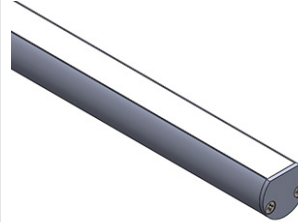


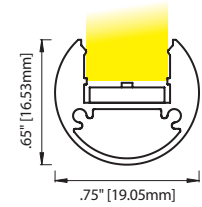
3RL LARGE ROUND EXTRUSION - LENSED

3RL: IP40 | Round extrusion for linear lighting applications. UL Listed dry/damp. Includes Nichia LEDs in choice of 21 LED Board options. See lumen outputs, CCTs, wattage and other variables on Linear Fundamentals.

Available in Silver, Black or Bronze Anodized, White Powder Coated, or Custom Finishes. Choice of Clear Acrylic lens (standard), 3 Opal diffusion lenses, or three focusing lenses L2 (18° - 31°), L3 (30° - 42°) or Lens 4 (78° - 82°). Photometrics vary based on CCT and lensing; see vltcorp.com for output conversion and other data specific to your fixture choices.



(Beam Angle based on 3RL fixture with Clear Acrylic lens)



ELL- 3RL -

	LED	CCT	Finish	Lens Options	Wire Exit	Fixtures Length	Listings & Options				
STANDARD PITCH	1720	260 lm/ft, 1.8 w/ft, 83+ CRI	20	2000°K	AL	Silver Anodized	PG	Clear Acrylic	WE1	Default	UL UL Listed CE CE Marked (RoHS) EM8 8mm End Mount Leg ¹ TM8 8mm T-Mount Leg ³
	2730	397 lm/ft, 2.9 w/ft, 83+ CRI	22	2200°K	BL	Black Anodized	L2	Lens 2 (26° - 32°)	C	Custom	
	4740	528 lm/ft, 3.7 w/ft, 83+ CRI	25	2500°K	BZ	Bronze Anodized	L3	Lens 3 (50° - 51°)			
	5760	665 lm/ft, 4.9 w/ft, 83+ CRI	27	2700°K	WH	White Powder Coat	L4	Lens 4 (89° - 92°)			
	6760	875 lm/ft, 6.5 w/ft, 83+ CRI	30	3000°K	C	Custom	OP1	Opal 1, Frosted			
	3720	223 lm/ft, 1.8 w/ft, 95+ CRI	35	3500°K			OP2	Opal 2, Medium			
	3740	430 lm/ft, 3.5 w/ft, 95+ CRI	40	4000°K			OP3	Opal 3, Heavy			
	3760	609 lm/ft, 5.2 w/ft, 95+ CRI	45	4500°K							
	3790	621 lm/ft, 6.9 w/ft, 98 CRI ¹	50	5000°K							
			20/30	2000°K/ 3000°K ²							
PITCHLESS	5140	287 lm/ft, 2.2 w/ft, 83+ CRI	25/40	2500°K/ 4000°K ²							See Fixture Length and Wattage Table. Choose the correct Code number for the LED board and fixture length of your choice or specify Custom Length as follows: C [12.25"] or C [311mm]
	5160	571 lm/ft, 4.3 w/ft, 83+ CRI	30/40	3000°K/ 4000°K ²							
	5180	920 lm/ft, 6.9 w/ft, 83+ CRI	35/45	3500°K/ 4500°K ²							
	3140	237 lm/ft, 2.2 w/ft, 95+ CRI									
	3160	469 lm/ft, 4.3 w/ft, 95+ CRI									
	3180	773 lm/ft, 6.9 w/ft, 95+ CRI									
	3150	202 lm/ft, 2.2 w/ft, 98 CRI ¹									
	3170	404 lm/ft, 3.9 w/ft, 98 CRI ¹									
	3190	710 lm/ft, 6.9 w/ft, 98 CRI ¹									
	7180	750 lm/ft, 6.9 w/ft, 83+/95+ CRI ²									
	5133	315 lm/ft, 3.4 w/ft, 87 CRI ¹									
5163	548 lm/ft, 6.6 w/ft, 87 CRI ¹										

■ Standard ■ HI CRI ■ Pitchless/Standard
■ Pitchless/Hi CRI ■ Pitchless/Dual Color
■ Pitchless/Narrow Focus ■ Ultra HI CRI

¹ Not Available in 20K, 22K or 25K CCT
² 7180 Boards Only: CRI Varies Based on CCT Combination

See Special Mounting Options for more information about specifying 3RL fixtures in Display Case

Basic and Free Standing Fixture Accessories - See Mounting Options for more information

ELL - AC - 3RL - PC	ELL - AC - 3RL - LC	ELL - AC - 3RL -SALC	ELL - AC - 3RL - MRC
Plastic Mounting Clip; Fixture extrusion rotates into clip. Screws to mounting surface. Raises fixture 0.13" (3.18mm). Allows 30° rotation. Allow 1 per 12" (min. 2 per fixture); See Mounting Options.	Locking Adjustable Mounting Clip; Screws to mounting surface. Raises fixture 0.13" (3.18mm). Full rotation with locking screw. Finishes to match fixture. Allow 2 per fixture (48" max span). See Mounting Options.	Locking Adjustable Mounting Clip with Self-Adhesive. Raises fixture 0.13" (3.18mm). Full rotation with locking screw. Finishes to match fixture. Allow 2 per fixture (48" max span). See Mounting Options.	Metal Mounting Clip; Fixture extrusion rotates into clip. Countersunk screw-hole so fixture sits flush to mounting surface. Allows 60° rotation. Allow 1 per 12" (min. 2 per fixture); Polished Nickel Finish; See Mounting Options.

