

EssentialLEDs®

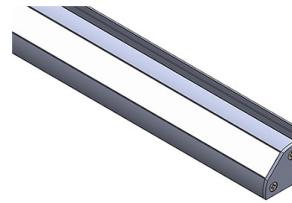
CHOICE

2QL CHOICE QUARTER ROUND EXTRUSION - LENSED

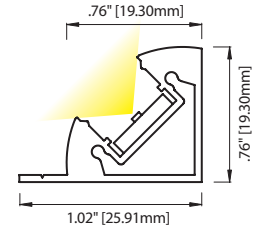
2QL Choice: IP40 | Quarter Round extrusion fits snugly into corners for bright, even linear lighting. UL Listed dry/damp. Includes selection of 8 LED Boards: 3 with Nichia LEDs on a Standard Pitch; 4 with EssentialLEDs Choice LEDs on a Narrow Pitch, and 1 with Choice LEDs with Dim-to-Warm (3000°K to 1800°K) capability when used with a HELD-5n1 driver. See lumen outputs, CCTs, wattage and other variables on Choice Linear Fundamentals.

Available in Silver or Black Finishes. Choice of Clear Acrylic lens (standard), 3 Opal diffusion lenses, or three focusing lenses L2 (26° - 32°), L3 (50° - 51°) or L4 (89° - 92°).

AVAILABLE IN LENGTHS UP TO 143.3" [3640MM]



(Beam Angle based on 2QL fixture with Clear Acrylic lens)



ELC- 2QL -

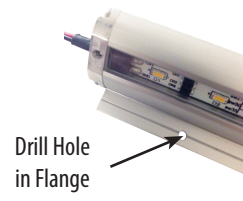
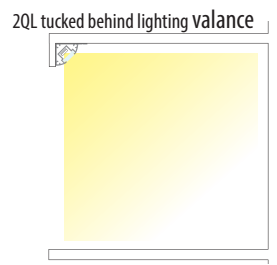
LED		Finish		Wire Exit		Listings & Options	
1435	288 lm/ft, 2.7 w/ft, 90+ CRI ²	AL	Silver Anodized	C	Custom	UL	UL Listed
2435	384 lm/ft, 3.7 w/ft, 90+ CRI ²	BL	Black Anodized			CE	CE Marked (RoHS)
3435	478 lm/ft, 5.5 w/ft, 90+ CRI ²						
4435	610 lm/ft, 5.8 w/ft, 90+ CRI ²						
CCT		Lens Options		Fixture Length			
1320	222 lm/ft, 2.0 w/ft, 95+ CRI ¹	23	2300°K	PG	Clear Acrylic	See Fixture Length and Wattage Table. Choose the correct Code number for the LED board and fixture length of your choice or specify Custom Length as follows: C [12.25"] or C [311mm]	
2320	335 lm/ft, 2.8 w/ft, 95+ CRI ¹	27	2700°K	L2	Lens 2 (26° - 32°)		
4320	590 lm/ft, 5.9 w/ft, 95+ CRI ¹	30	3000°K	L3	Lens 3 (50° - 51°)		
7435	455 lm/ft, 5.5 w/ft, 90+ CRI ⁵	35	3500°K	L4	Lens 4 (89° - 92°)		
		40	4000°K	OP1	Opal 1, Frosted		
		45	4500°K	OP2	Opal 2, Medium ³		
		18/30	1800°K/ 3000°K ⁶	OP3	Opal 3, Heavy ^{3,4}		

- Narrow Pitch Choice LEDs
- Standard Pitch Nichia LEDs
- Dim-to-Warm Choice LEDs

¹ Not Available in 23K CCT
² Not Available in 45K CCT
⁵ Requires a HELD-5n1 Driver

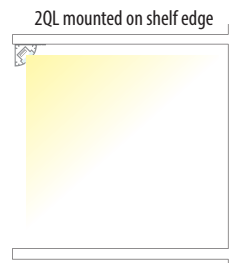
⁶ 7435 Boards Only: CRI varies based on CCT combination

³ Will provide full diffusion
⁴ Not Title 24 JA8-2016 compliant



2QL's self-contained mounting flange allows the fixture to fit tightly into corners, with a 94° beam angle and wide field angle for fully lighting shelf and undercabinet spaces. 2QL can tuck neatly behind a lighting valance, as illustrated at left, or if no valance is provided, 2QL can mount flush with the front edge of the shelf or cabinet. The fixture's slim, finished back surface ensures an attractive presentation, as shown in the photos to the right.

The 2QL flange is scored for easy drilling; mounting holes should be drilled approximately every 20" (minimum two holes per fixture). The 2QL fixture can also be mounted using VHB tape.



When visible, the slim 2QL fixture adds an attractive accent to cabinetry

