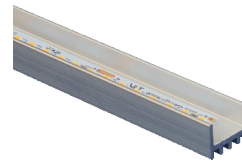


New! 1S CHOICE SMALL SQUARE EXTRUSION - OPTIONAL LENS

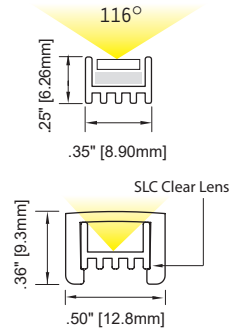
1S Choice: IP20 | Small square extrusion for linear lighting applications. Includes selection of 3 LED Boards with EssentialLEDs Choice LEDs on a Narrow Pitch. See lumen outputs, CCTs, wattage and other variables on Choice Linear Fundamentals.

Available in Silver or Black Finishes. Photometrics vary based on CCT; see vltcorp.com for output conversion and other data specific to your fixture choices.

AVAILABLE IN LENGTHS UP TO 95.28" [2420MM]



OBSERVE PRECAUTIONS FOR HANDLING ELECTROSTATIC SENSITIVE DEVICES



ELC- 1S -

LED		Finish		Wire Exit		Listings	
1435	288 lm/ft, 2.7 w/ft, 90+ CRI	AL	Silver Anodized	WE1	Default	UL	UL Listed
2435	384 lm/ft, 3.7 w/ft, 90+ CRI	BL	Black Anodized	C	Custom	CE	CE Marked (RoHS)
3435	478 lm/ft, 5.5 w/ft, 90+ CRI						

Narrow Pitch Choice LEDs

CCT		Lens Options		Fixture Length	
23	2300°K	NL	No Lens	See Fixture Length and Wattage Table. Choose the correct Code number for the LED board and fixture length of your choice or specify Custom Length as follows: C (12.25") or C [311mm]	
27	2700°K	SLC	Clear Lens ¹		
30	3000°K				
35	3500°K				
40	4000°K				

¹With Clear Lens, use ELL-AC-2SL-MC Fixed Metal Mounting Clip

Fixture Accessories			
ELL - AC - 1S - MC	ELL - AC - 1S - AMC	ELL - AC - S123 - AB	ELL - AC - 2SL - MC
Fixed Metal Mounting Clip. Fixture with No Lens snaps into clip. Allow 1 per 12" (min. 2 per fixture). See Mounting Options.	Adjustable Metal Mounting Clip. Offset screws allow flush mounting. Bends to desired angle. Allow 1 per 12" (min. 2 per fixture). See Mounting Options.	Adjustable Metal Bracket. for use with Fixed Metal Mounting Clip (one bracket per clip). 30° adjustability. Raises fixture 3/8" (9.52mm). Bracket allows repeated angle adjustments, and easier angle adjustments in hard-to-reach areas like ceiling covers. See Mounting Options.	Fixed Metal Mounting Clip. Fixture with SLC Lens snaps into clip. Allow 1 per 12" (min. 2 per fixture). See Mounting Options.